

Cytokeratin 8 Recombinant Rabbit Monoclonal Antibody

Cat: HKZ150124

Company: HaoKebio

Uniprot ID:: P05787

Applications:

IHC: 1:100-1:200

Organism: Rabbit

IHC-Polymer: 1:400-1:800

Species reactivity: Human

TSA: 1:500-1:1000

Predicted Molecular Weight: 54 kDa

Background:

Cytokeratin 8 (CK8) is a member of the Type II intermediate filament (IF) gene family. Most intracellular CK8 pairs with its partner CK18 to form highly insoluble 10-nanometer filaments, extending from the nucleus to the inner leaflet of the cytoplasmic membrane.

CK8 is consistently expressed in simple epithelial cells and some cancer cells. In non-cancerous tissues, CK8 is typically expressed in normal glandular epithelium, transitional epithelium, and hepatocytes. In cancerous tissues, CK8 tends to be highly expressed in adenocarcinomas, such as human breast cancer or colorectal cancer.

Protein full name:

Cytokeratin 8

Synonyms:

Cytokeratin 8

Immunogen:

A synthetic peptide corresponding to amino acid residues 383 to the C-terminus of CK-8.

Isotype:

IgG

Subcellular location:

Cytoplasm

Purity:

Affinity purification

Form:

Liquid

Storage Buffer:

59% PBS, 0.01% sodium azide, 40% glycerol, 0.05% BSA.

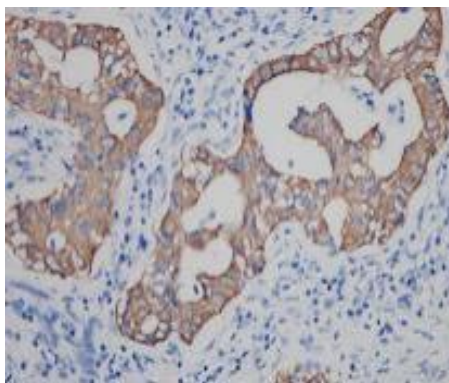
Storage:

Ship on blue ice. Upon receipt, aliquot and store at -25°C to -18°C. Avoid repeated freeze-thaw cycles.

Experimental procedure:

Antigen retrieval using Tris-EDTA buffer (pH 9.0); primary antibody incubation at room temperature (18 °C - 25 °C) for 30 minutes.

Images:



Immunohistochemical results of CK8 in human lung adenocarcinoma tissue (formalin-fixed, paraffin-embedded sections) labeled with HKZ150124. Antigen retrieval was performed using Tris-EDTA buffer (pH 9.0).

Source of Reagents:

1. Gonias SL, et al. Front Biosci. 2001 Nov 1;6:D1403-11).
2. T Makino1, et al. British Journal of Cancer (2009) 101, 1298-1306.

Source of Reagents:

发表[中文论文]请标注: Cytokeratin 8(HKZ150124)由杭州浩克生物技术有限公司提供;

发表[英文论文]请标注: Cytokeratin 8(HKZ150124) were kindly provided by Hangzhou Haoke Biotechnology Co., Ltd.

