

ZO-1 Recombinant antibody

Cat:B26003R

Company: Haokebio

Uniprot ID:Q07157

Applications: IHC:1:500-1:2000

Organism:Rabbit

IHC-Polymer:1:2000-1:8000

Species reactivity:Human Mouse

IHC-TSA:1:2500-1:10000

IF:1:50-1:100

WB:1:2000-1:40000

Background:

Tight junction (or zonula occludens) form the continuous intercellular barrier between epithelial and endothelial cells, which is required to separate tissue spaces and regulate selective movement of solutes across the epithelium and endothelium. ZO-1 (also known as TJP1) is a peripheral membrane phosphoprotein located on the cytoplasmic face and is expressed in tight junctions of both epithelial and endothelial cells. It binds the transmembrane proteins occludin and the claudins linking them to cytoskeletal actin. ZO-1 belongs to a family of multidomain proteins known as the membrane-associated guanylate kinase homologs (MAGUKs). It is a pivotal tight junction protein and may be involved in signaling mechanisms regulating cell proliferation and differentiation.

Protein full name:

tight junction protein 1

Synonyms:

TJP1, 240150D7, Tight junction protein 1, Tight junction protein ZO 1, Tight junction protein ZO-1

Immunogen:

Recombinant protein

Isotype:

IgG

Subcellular location:

Cytoskeleton

Purity:

Affinity purification

Form:

Liquid

Storage Buffer:

PBS with 0.02% sodium azide, 100 µg/ml BSA and 50% glycerol.

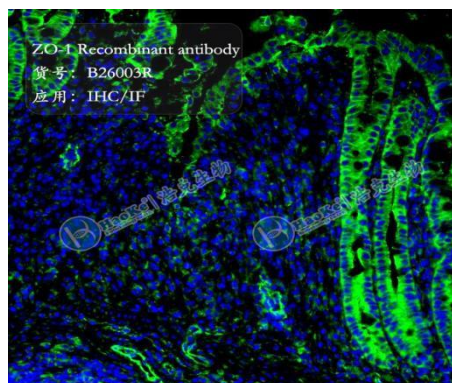
Storage:

Store at -20 °C for one year.

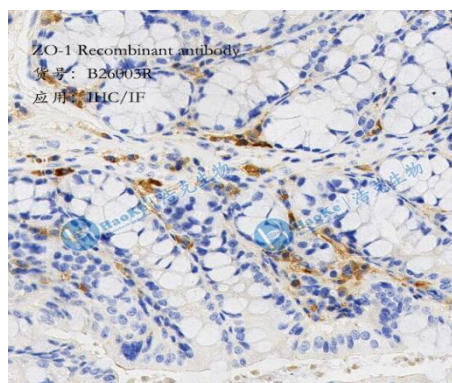
Experimental procedure:

Antigen retrieval: Citrate buffer (pH 6.0), Medium high heat for 8 minutes, stop for 7 minutes, medium high heat for 8 minutes. Incubate antibody, 4 °C overnight. Secondary antibody: Poly-HRP Goat Anti-Rabbit & Mouse Universal Secondary Antibody, RT, 1h.

Images:



Sample: Mouse intestine, 4% PFA 12-24h.



Sample: Mouse intestine, 4% PFA 12-24h.

Source of Reagents:

发表[中文论文]请标注:ZO-1(B26003R)由杭州
浩克生物技术有限公司提供;
发表[英文论文]请标注:ZO-1(B26003R) were ki
ndly provided by Hangzhou Haoke Biotechnolog
y Co., Ltd.