

Claudin 1 Recombinant antibody

Cat:B03034R

Company: Haokebio

Uniprot ID:O95832

Applications: IHC:1:50-1:300

Organism:Rabbit

IHC-Polymer:1:200-1:1200

Species reactivity:Human Mouse Rat

IHC-TSA:1:250-1:1500

Molecular Weight Calculation:23 kDa

WB:1:1000-1:4000

Observed Molecular Weight:18 kDa

Background:

Claudins are a family of proteins that are the most important components of the tight junctions, where they establish the paracellular barrier that controls the flow of molecules in the intercellular space between the cells of an epithelium. 23 claudins have been identified. They are small (20-27 kDa) proteins with similar structures. They have four transmembrane domains, with the N-terminus and the C-terminus in the cytoplasm. Claudin-1 is an integral membrane protein expressed primarily in keratinocytes and normal mammary epithelial cells. Claudin 1 forms tight junctions with other claudin proteins and plays an important role in the intestinal epithelial barrier.

Protein full name:

claudin 1

Synonyms:

Caudin 1, CLDN1, Claudin-1, CLD1, ILVASC

Immunogen:

Recombinant protein

Isotype:

IgG

Subcellular location:

Membrane

Purity:

Affinity purification

Form:

Liquid

Storage Buffer:

PBS with 0.02% sodium azide, 100 µg/ml BSA and 50% glycerol.

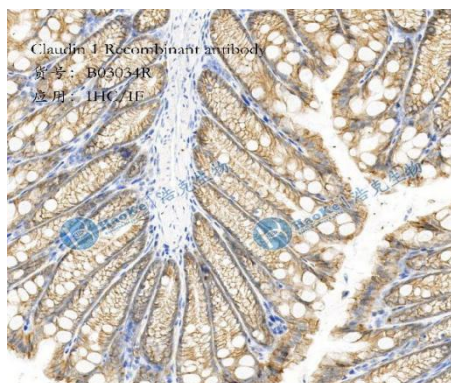
Storage:

Store at -20 °C for one year.

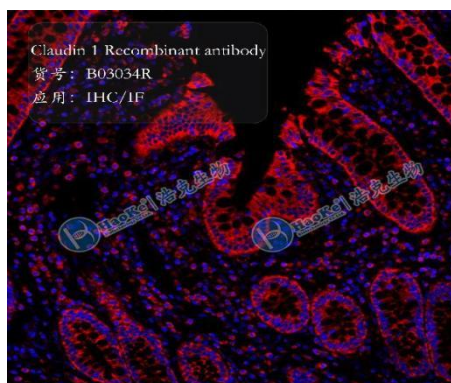
Experimental procedure:

Antigen retrieval: Citrate buffer (pH 6.0), Medium high heat for 8 minutes, stop for 7 minutes, medium high heat for 8 minutes. Incubate antibody, 4°C overnight. Secondary antibody: Poly-HRP Goat Anti-Rabbit & Mouse Universal Secondary Antibody, RT, 1h.

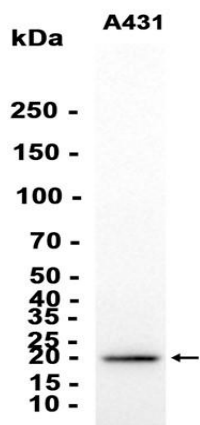
Images:



Sample: Mouse intestine, 4% PFA 12-24h



Sample: Mouse intestine, 4% PFA 12-24h



Dilution of 1:1000 incubated at room temperature for 1.5 hours.

Source of Reagents:

发表[中文论文]请标注:Claudin 1(B03034R)由杭州浩克生物技术有限公司提供;

发表[英文论文]请标注:Claudin 1(B03034R) were kindly provided by Hangzhou Haoke Biotechnology Co., Ltd.