

EPCAM/CD326 Recombinant antibody

Cat: B05004R

Company: Haokebio

Uniprot ID: P16422

Applications: IHC:1:1000-1:10000

Organism: Rabbit

IHC-Polymer:1:4000-1:40000

Species reactivity: Human Mouse Rat

IHC-TSA:1:5000-1:50000

Molecular Weight Calculation: 35 kDa

IF:1:50-1:500

Observed Molecular Weight: 40 kDa

WB:1:500-1:1000

Background:

Epithelial cell adhesion molecule (EpCAM, CD326) is a type I transmembrane glycoprotein that functions as a homophilic, epithelial-specific intercellular cell-adhesion molecule. In addition to cell adhesion, EpCAM is also involved in cellular signaling, cell migration, proliferation, and differentiation. EpCAM is highly expressed on most carcinomas and therefore of potential use as a diagnostic and prognostic marker for a variety of carcinomas, and has become a therapeutic target. EpCAM may occur in distinct forms due to glycosylation.

Protein full name:

epithelial cell adhesion molecule

Synonyms:

EPCAM, EGP, CO17 1A, CO 17A, Cell surface glycoprotein Trop-1

Immunogen:

Recombinant protein

Isotype:

IgG

Subcellular location:

Membrane

Purity:

Affinity purification

Form:

Liquid

Storage Buffer:

PBS with 0.02% sodium azide, 100 µg/ml BSA and 50% glycerol.

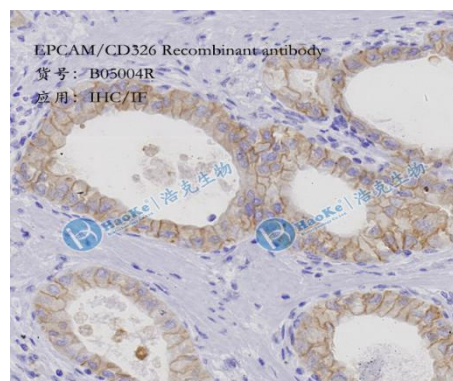
Storage:

Store at -20 °C for one year.

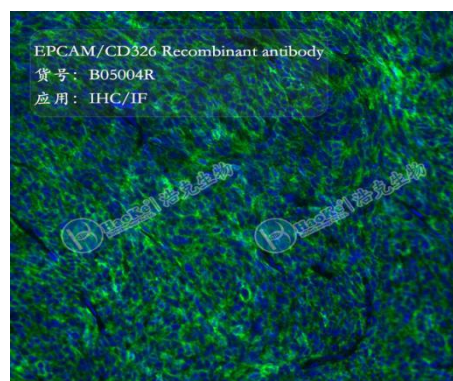
Experimental procedure:

Antigen retrieval: Citrate buffer (pH 9.0), Medium high heat for 8 minutes, stop for 7 minutes, medium high heat for 8 minutes. Incubate antibody, 4°C overnight. Secondary antibody: Poly-HRP Goat Anti-Rabbit & Mouse Universal Secondary Antibody, RT, 1h.

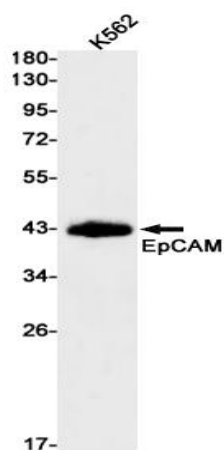
Images:



Sample: Mouse intestine, 4% PFA 12-24h



Sample: Mouse tumor, 4% PFA 12-24h



Dilution of 1:1000 incubated at room temperature for 1.5 hours.

Source of Reagents:

发表[中文论文]请标注:EPCAM/CD326(B05004

R)由杭州浩克生物技术有限公司提供;

发表[英文论文]请标注:EPCAM/CD326(B05004

R) were kindly provided by Hangzhou Haoke Biotechnology Co., Ltd.