

Occludin Recombinant antibody

Cat:B15002R

Company: Haokebio

Uniprot ID:Q16625

Applications: IHC:1:500-1:4000

Organism:Rabbit

IHC-Polymer:1:2000-1:16000

Species reactivity:Human Mouse Rat

IHC-TSA:1:2500-1:20000

Molecular Weight Calculation:59 kDa

IF:1:50-1:200

Observed Molecular Weight:65 kDa

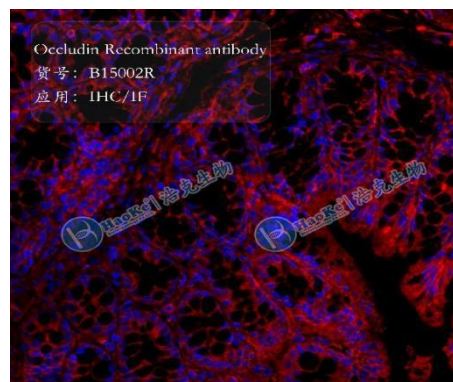
WB:1:1000-1:10000

Background:

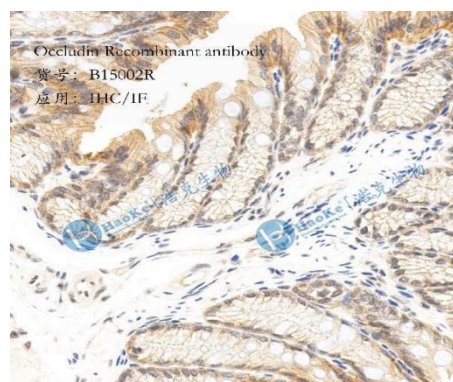
Occludin is an integral membrane protein located at the tight junction. It is a tetraspanin protein with four transmembrane domains, intracellular N and C termini, and two extracellular loops. Occludin plays a role in the formation and regulation of the tight junction paracellular permeability barrier. Occludin can exist in different isoforms, owing to modifications at the posttranscriptional and posttranslational levels, the monomeric occludin migrates as 53-65 kDa on SDS-PAGE.

Antigen retrieval: Citrate buffer (pH 9.0) , Medium high heat for 8 minutes, stop for 7 minutes, medium high heat for 8 minutes. Incubate antibody, 4°C overnight. Secondary antibody: Poly-HRP Goat Anti-Rabbit & Mouse Universal Secondary Antibody, RT, 1h.

Images:



Sample: Mouse intestine, 4% PFA 12-24h



Sample: Mouse intestine, 4% PFA 12-24h

Protein full name:

occludin

Synonyms:

OCLN

Immunogen:

Recombinant protein

Isotype:

IgG

Subcellular location:

Secreted

Purity:

Affinity purification

Form:

Liquid

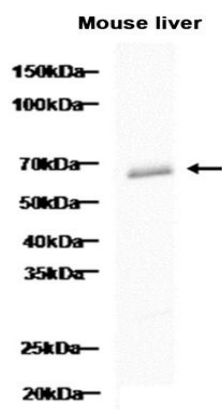
Storage Buffer:

PBS with 0.02% sodium azide, 100 µg/ml BSA and 50% glycerol.

Storage:

Store at -20 °C for one year.

Experimental procedure:



Dilution of 1:5000 incubated at room temperature for 1.5 hours.

Source of Reagents:

发表[中文论文]请标注:Occludin(B15002R)由杭州浩克生物技术有限公司提供;

发表[英文论文]请标注:Occludin(B15002R) were kindly provided by Hangzhou Haoke Biotechnology Co., Ltd.