

## SMA- $\alpha$ Recombinant antibody

**Cat:**B19001R

**Company:** HaoKebio

**Uniprot ID:**P62736

**Applications:** IHC:1:2500-1:10000

**Organism:**Rabbit

IHC-Polymer:1:10000-1:40000

**Species reactivity:**Human Mouse Rat

IHC-TSA:1:12000-1:50000

**Molecular Weight Calculation:**42 kDa

IF:1:100-1:500

**Observed Molecular Weight:**42 kDa

WB:1:20000-1:100000

### Background:

ACTA2 (also known as  $\alpha$ -smooth muscle actin or  $\alpha$ -SMA) belongs to the actin family. Actins are highly conserved proteins that are involved in various types of cell motility and are ubiquitously expressed in all eukaryotic cells. ACTA2 is primarily expressed in vascular smooth muscle and anti-ACTA2 is commonly used to marker smooth muscle cells.

### Protein full name:

actin, alpha 2, smooth muscle, aorta

### Synonyms:

ACTA2, Alpha SMA,  $\alpha$ -SMA, smooth muscle actin, 5H7

### Immunogen:

Recombinant protein

### Isotype:

IgG

### Subcellular location:

Cytoskeleton

### Purity:

Affinity purification

### Form:

Liquid

### Storage Buffer:

PBS with 0.02% sodium azide, 100  $\mu$ g/ml BSA and 50% glycerol.

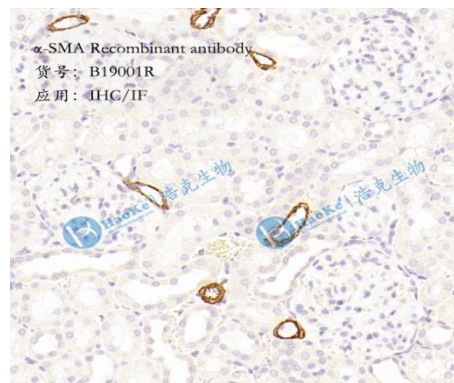
### Storage:

Store at -20 °C for one year.

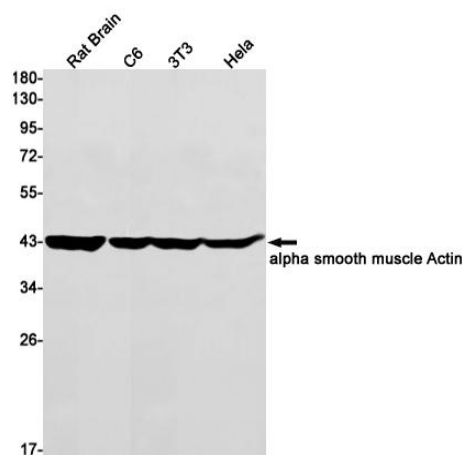
### Experimental procedure:

Antigen retrieval: Citrate buffer (pH 6.0) , Medium high heat for 8 minutes, stop for 7 minutes, medium high heat for 8 minutes. Incubate antibody, 4°C overnight. Secondary antibody: Poly-HRP Goat Anti-Rabbit & Mouse Universal Secondary Antibody, RT, 1h.

### Images:



Sample: Mouse kidney, 4% PFA 12-24h



Dilution of 1:50000 incubated at room temperature for 1.5 hours.

### Source of Reagents:

发表[中文论文]请标注:SMA- $\alpha$ (B19001R)由杭州浩克生物技术有限公司提供;

发表[英文论文]请标注:SMA- $\alpha$ (B19001R) were  
kindly provided by Hangzhou Haoke Biotechnology Co., Ltd.