

p21 Recombinant Rabbit Monoclonal Antibody

Cat:HKZ150186
Company: HaoKebio

Uniprot ID: P38936

Organism: Rabbit

Species reactivity: Human

Predicted Molecular Weight: 18 kDa

Applications: IHC: 1:100-1:200

IHC-Polymer: 1:400-1:800

TSA:1:500-1:1000

Background:

p21 is a protein encoded by the CDKN1A gene located on chromosome 6 (6p21.2), also known as a cyclin-dependent kinase inhibitor. p21 binds to CDK2/CDK4 and inhibits their activity, thereby regulating cell cycle progression during the G1 phase. p21 is expressed in all adult tissues and is also widely expressed in tumor tissues, such as gastric cancer, non-small cell lung cancer, and thyroid cancer. The expression of p21 is generally associated with a favorable prognosis.

Protein full name:

Cyclin-dependent kinase inhibitor 1A

Synonyms:

CDKN1A, P21;CDKN1A, CDK-interacting protein 1, MDA-6

Immunogen:

Synthetic peptide corresponding to amino acid residues 1-100 of p21.

Isotype:

IgG

Subcellular location:

Nucleus

Purity:

Affinity purification

Form:

Liquid

Storage Buffer:

59% PBS, 0.01% sodium azide, 40% glycerol, 0.05% BSA.

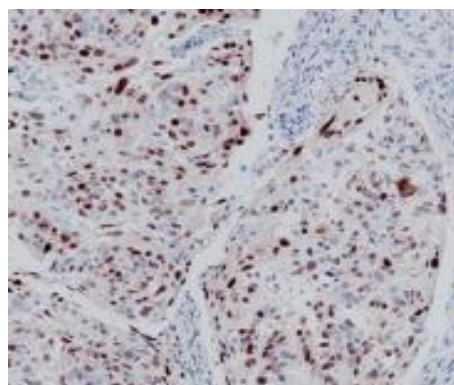
Storage:

Ship on blue ice. Upon receipt, aliquot and store at -25°C to -18°C. Avoid repeated freeze-thaw cycles.

Experimental procedure:

Antigen retrieval using Tris-EDTA buffer (pH 9.0); primary antibody incubation at room temperature (18 °C - 25 °C) for 30 minutes.

Images:



Immunohistochemical results of p21-labeled cervical tumor tissue (formalin-fixed, paraffin-embedded sections) using HKZ 150186. Tris-EDTA buffer (pH 9.0) was used for antigen retrieval.

Source of Reagents:

1. Komiya T et al. Clin Cancer Res. 1997 Oct;3(10):1831-5.
2. Natsugoe S et al. Clin Cancer Res. 1999 Sep;5(9):2445-9.

Source of Reagents:

发表[中文论文]请标注: p21 (HKZ150186) 由杭州浩克生物技术有限公司提供;

发表[英文论文]请标注: p21 (HKZ150186) were kindly provided by Hangzhou Haoke Biotechnology Co., Ltd.

