

## beta Tubulin Recombinant antibody

**Cat:**B20002L

**Company:** HaoKebio

**Uniprot ID:**P07437

**Applications:** IHC:1:200-1:500

**Organism:**Rabbit

IHC-Polymer:1:800-1:2000

**Species reactivity:**Human Mouse Rat

IHC-TSA:1:1000-1:2500

**Molecular Weight Calculation:**50 kDa

WB:1:5000-1:50000

**Observed Molecular Weight:**50 kDa

### Background:

There are five tubulins in human cells: alpha, beta, gamma, delta, and epsilon. Tubulins are conserved across species. They form heterodimers, which multimerize to form a microtubule filament. An alpha and beta tubulin heterodimer is the basic structural unit of microtubules. The heterodimer does not come apart, once formed. The alpha and beta tubulins, which are each about 55 kDa MW, are homologous but not identical. Alpha, beta, and gamma tubulins have all been used as loading controls. Tubulin expression may vary according to resistance to antimicrobial and antimitotic drugs.

### Protein full name:

tubulin, beta 3

### Synonyms:

Tubulin beta III, Tubulin beta 3 chain, Tubulin beta-4 chain, Tubulin beta-3 chain, TUBB4

### Immunogen:

Recombinant protein

### Isotype:

IgG

### Subcellular location:

Cytoplasm

### Purity:

Affinity purification

### Form:

Liquid

### Storage Buffer:

PBS with 0.02% sodium azide, 100 µg/ml BSA and 50% glycerol.

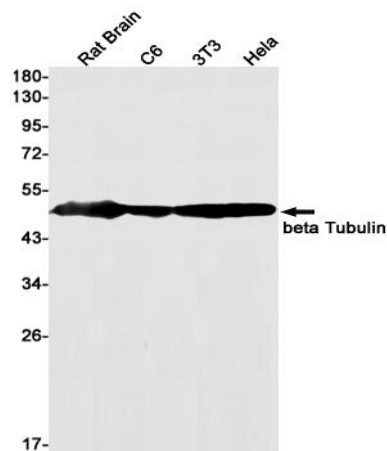
### Storage:

Store at -20 °C for one year.

### Experimental procedure:

Antigen retrieval: Citrate buffer (pH 6.0), Medium high heat for 8 minutes, stop for 7 minutes, medium high heat for 8 minutes. Incubate antibody, 4°C overnight. Secondary antibody: Poly-HRP Goat Anti-Rabbit & Mouse Universal Secondary Antibody, RT, 1h.

### Images:



Dilution of 1:10000 incubated at room temperature for 1.5 hours.

### Source of Reagents:

发表[中文论文]请标注:beta Tubulin(B20002L)由杭州浩克生物技术有限公司提供;

发表[英文论文]请标注:beta Tubulin(B20002L) were kindly provided by Hangzhou Haoke Biotechnology Co., Ltd.